

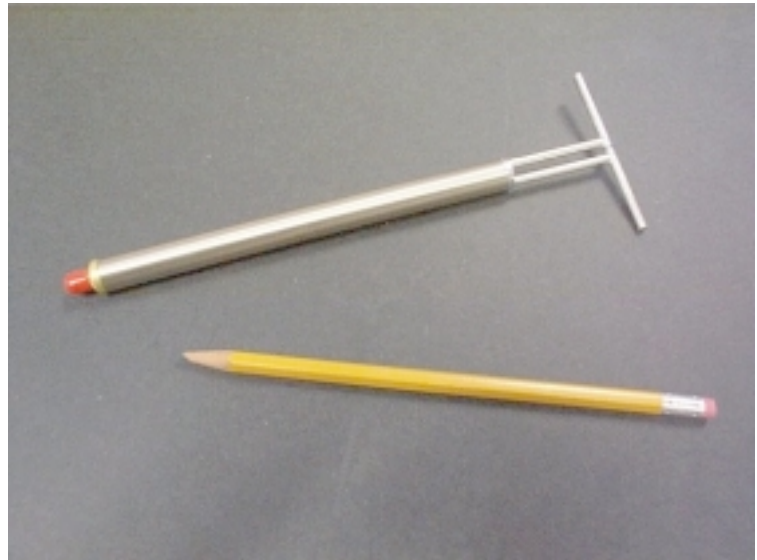
### Specifications

Frequency:	See Table
Gain:	2.2 dBi typical
Impedance:	50 ohms nominal
VSWR:	< 2 :1
Connector:	Type SMA female
Polarization:	Linear
Cross Polarization:	20 dB
Symmetry:	±0.5 dB
Power:	25 watts cw max.
Length:	½ wavelength at CF
Thickness:	0.5 in. (1.3 cm)
Mounting Tube:	½" dia. SST

**Our PD Series Precision Dipoles** are narrowband, resonant antennas that are designed for transmitting and receiving rf signals at specific frequencies. They are manufactured in accordance with ANSI/AAMI PC69:2000.

Each dipole is ½ wavelength long at its frequency of operation, and contains a series-parallel coaxial stub balun that meets rigid specifications. Dipoles cut to custom frequencies are available upon request.

An optional polarization mount is available for use with a tripod or permanent fixture.



Model PD1850

Model	Center Freq.
PD450	450 MHz
PD600	600 MHz
PD800	800 MHz
PD825	825 MHz
PD850	850 MHz
PD875	875 MHz
PD900	900 MHz

Model	Center Freq.
PD930	930 MHz
PD1500	1500 MHz
PD1610	1610 MHz
PD1850	1850 MHz
PD1910	1910 MHz
PD2450	2450MHz
PD3000	3000 MHz

#### Options

- Polarization mount
- Individual calibration
- Carrying case
- Custom frequencies

#### Applications

- Signal Injection
- EMC and Wireless testing
- Signal monitoring and detection

